



Sierra Vista Fire & Medical Services 2024

Brian Jones
Fire Chief



Mission Statement

We, the members of Sierra Vista Fire & Medical Services, will passionately serve our community by being helpful and kind.

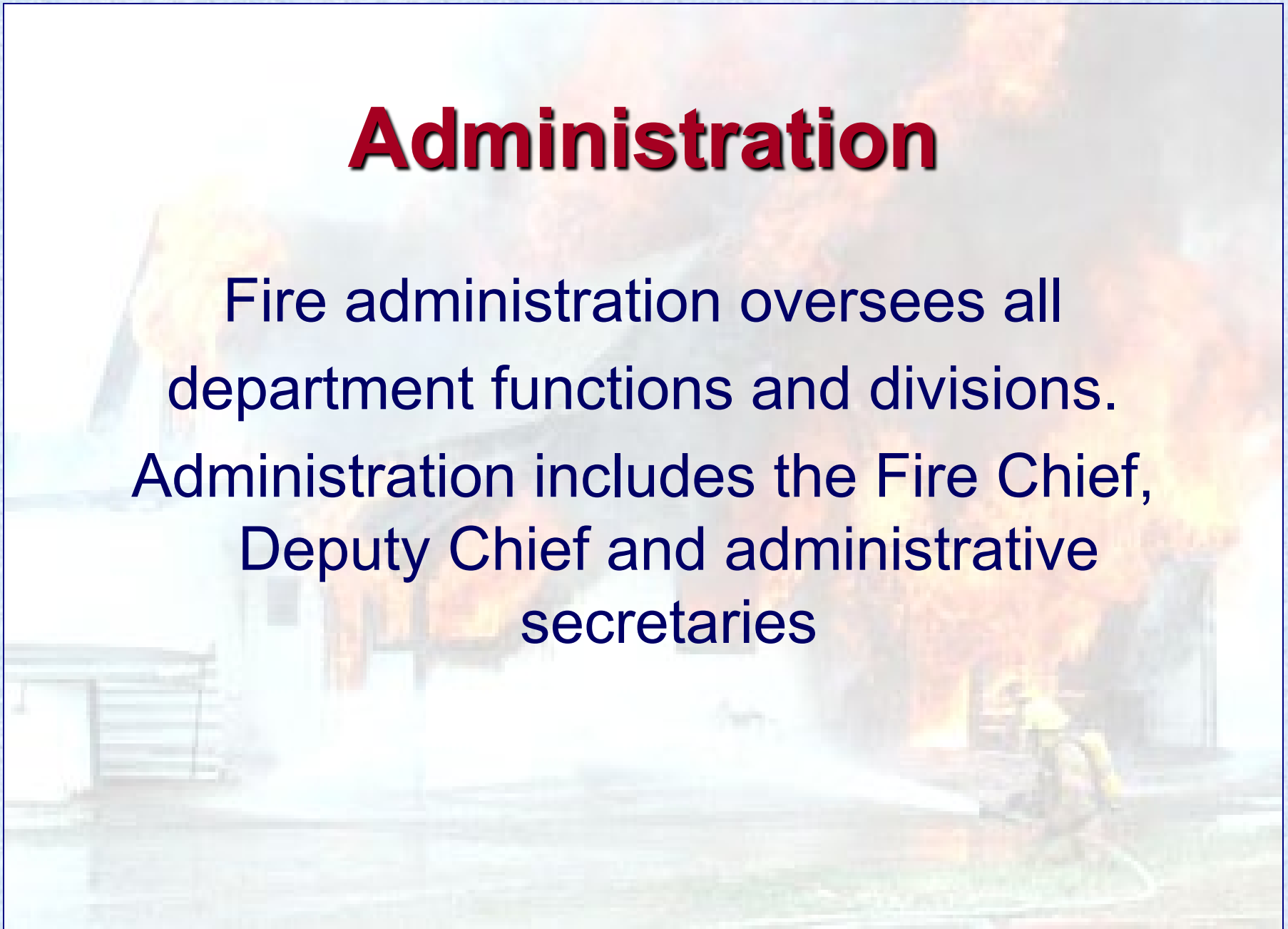
Always.

Our Vision

We, the members of Sierra Vista Fire & Medical Services, will aggressively pursue new opportunities to enhance our services and exceed our community's expectations.

Administration

Fire administration oversees all department functions and divisions. Administration includes the Fire Chief, Deputy Chief and administrative secretaries



OPERATIONS

Deputy Chief Brad Dever handles day to day operations. This includes Support Services, Personnel Services and EMS. Additional responsibilities maintaining policies and procedures.



Sierra Vista Fire & Medical Services

Divisions

Communications-Health/Safety

EMS/Fort Huachuca

Physical Resources

Prevention/CRR

Training

Communications / Health and Safety

Battalion Chief Josh Meeker handles communication issues with dispatch (response plans, Spillman/CAD data, radio traffic, EMD), Health and Safety, Physicals, Infectious Diseases

EMS/Fort Huachuca

Battalion Chief Justin Wright is responsible for tracking and ensuring that all members are current for requisite certifications. Plans, and schedules EMS training classes and specialized training events, and liaisons with CVMC regarding EMS issues. Handles scheduling and manages personnel for FH EMS. Mike McKearney is our EMS Supervisor

Physical Resources

- Battalion Chief Matt Irlmeier is responsible for Physical resourcing. This includes Vehicles, Equipment and Stations Supplies, Uniform Allowance)



Prevention/CRR

Battalion Chief/ Fire Marshal Don Foster oversees and administers the fire prevention division, which is responsible for fire inspections, pre-plans, site reviews, and fire origin & cause investigations. 1 Fire Inspector

Training

Battalion Chief Sam Marshall is responsible

for the design and implementation of training and exercises for all response disciplines. He will also be the accreditation manager.

SVF&MS Services

- Smoke house
- Blood pressure checks
- Christmas drive
- Station tours/engine company visits
- CPR/first aid instruction
- Smoke detector checks
- Business inspections
- Safety fair presentations
- Medical information sheets
- Career days
- Bike helmets
- Car seat checks/installs
- AED program
- Pub info brochures
- Youth Fire Setter Program
- Fire extinguisher training
- Dunk tank fills
- Burn permits

Staffing

A background image showing a firefighter in full gear, including a helmet and jacket, spraying a large fire with a hose. The fire is intense, with bright orange and yellow flames rising from a building. The scene is set outdoors, and the firefighter is positioned in the foreground, facing the fire.

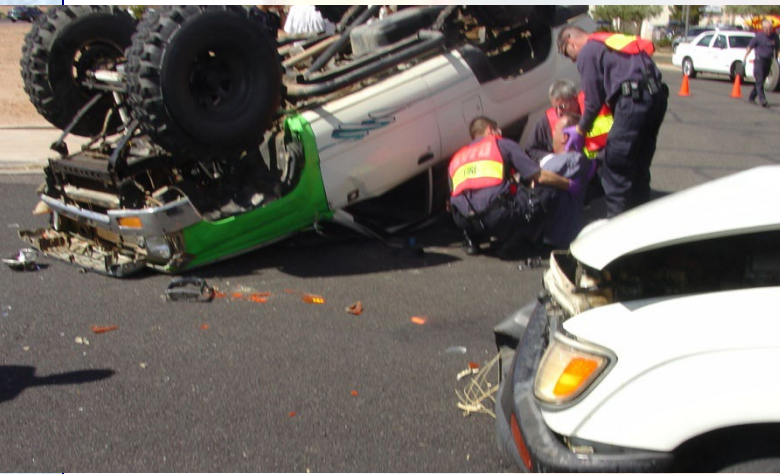
Three battalions oversee day to day staffing, response, & training activities

- 4 stations, 2 engines, 1 truck, 3 ambulances
- 2 Fort Huachuca medic unit. Black Tower, Fire Station 2
- 9 captains
- 9 engineers
- 27 firefighters
- 6 part-time EMS
- 27 EMS personnel

Automatic/Mutual Aid

- There is a Statewide Mutual Aid plan the SVFMS is involved with.
- We have a countywide Mutual Aid plan that all agencies are involved with.
- We have Automatic Aid with Fry Fire.
- Close to home we do have Mutual Aid with Fort Huachuca, Palominas and Whetstone.
- Arizona Ambulance is also part of the plan

Fire & EMS Operations

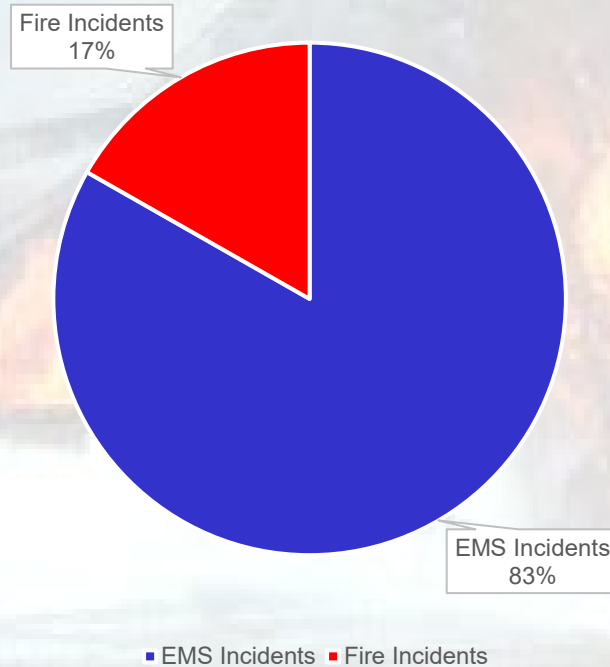


Historical Call Data

	2020	2021	2022	2023	2024
Total calls for service	7707	8125	8828	9433	10215
Automatic Aid Given	498	543	647	585	554
Automatic Aid Received	902	1079	1292	1162	971
Total fire calls	752	1041	2062	2252	1361
Structure fires	37	104	88	91	90
Vehicle fires	19	15	24	13	13
Brush fires	11	34	29	37	35
Other (alarm, smoke, assist...)	685	489	1385	824	809
Total EMS calls	6994	6579	6766	7181	8854
Cardiac Arrest	541	623	114	84	72
Chest Pain			613	515	502
Stroke	135	142	183	193	193
MVA	310	237	277	286	352
Diabetic	117	98	126	121	104
EMS other	5891	5479	5730	6461	7631
Commercial Inspections	967	1025	944	650	665
ISO rating	4	4	4	4	4
Grant and federal fund acquisition	N/A	N/A	N/A	N/A	N/A

2024 Incident Data

10,215 Total City Incidents



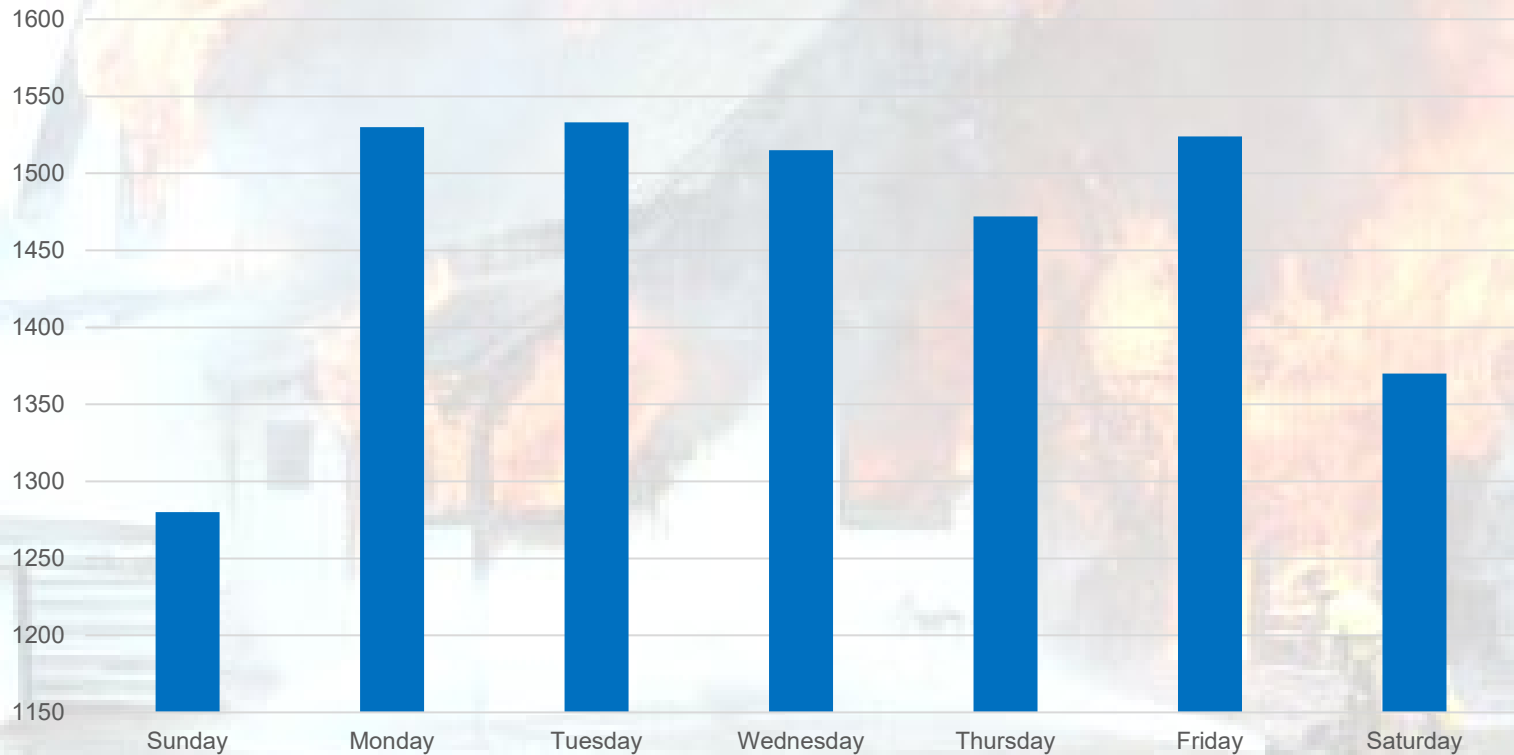
Individual Unit Response

A photograph of a large building on fire, with thick smoke and bright orange flames rising from the structure. A firefighter in full gear is visible in the foreground, working near the base of the building. The scene is hazy due to the smoke.

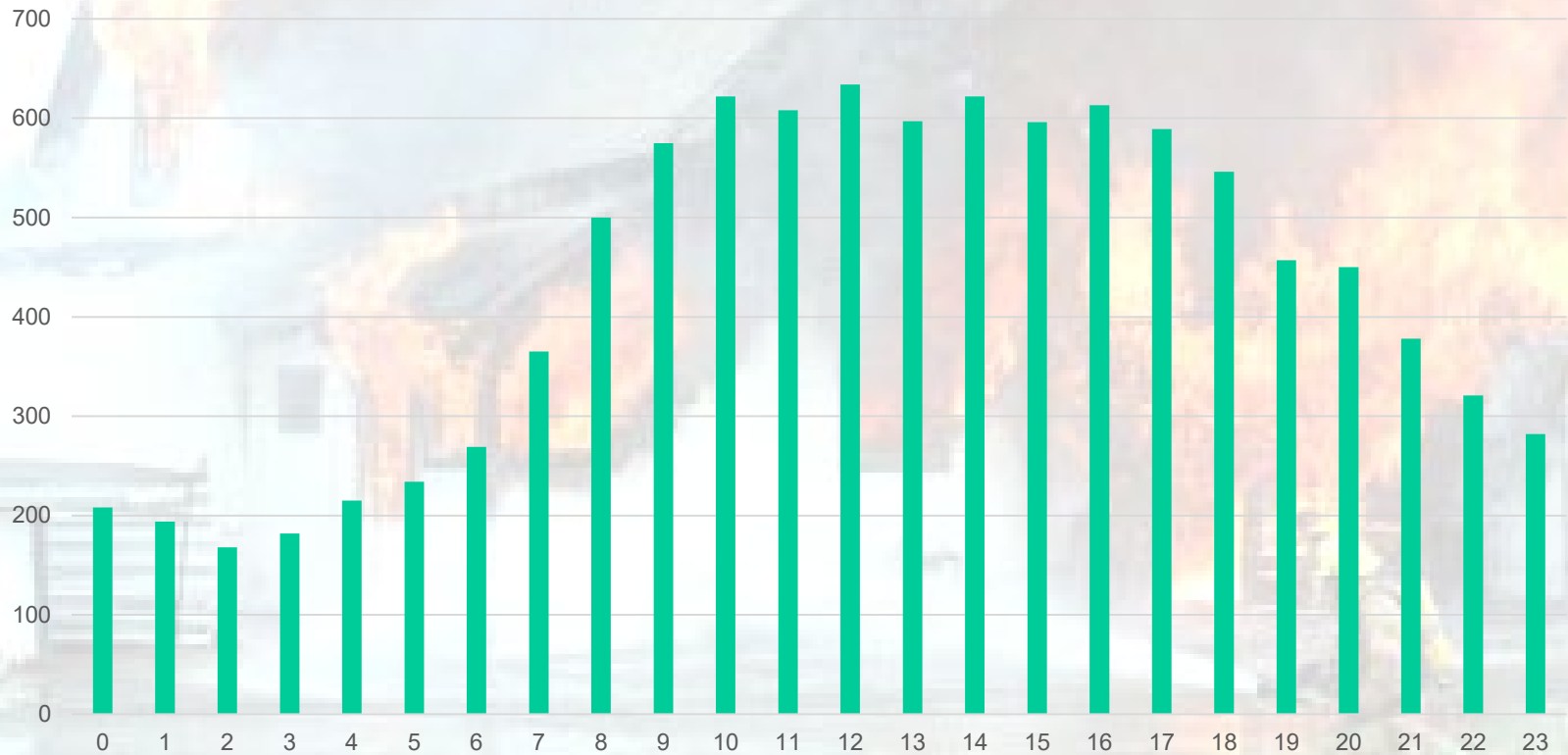
• Engine 201	2734
• TK/TWR 202	2317
• Engine 203	1730
• Medic 201	2693
• Medic 202	2199
• Medic 204	2379
• Medic 205	284
• Medic 206	8
• BN203	464

Total Unit Responses **14,808**

2024 Calls by Day



2024 Calls by Time of Day



2024 Calls By Nature Code

Abdominal Pain	218	Headache	13
Aircraft Emergency	1	Heart Problem	213
Allergy	60	Heat/Cold	13
Altered LOC	665	Lift Assist	653
Animal Bite	14	Lockbox	53
Assault	101	Medical Alarm	82
Back Pain	65	MVA	352
Bleeding Person	282	Overdose	67
Breathing Problem	1124	Possible Deceased	27
Brush Fire	35	Pregnancy	19
Cardiac Arrest	72	Residential Fire (includes dngrd)	63
Chest Pain	502	Seizure	224
Choking	38	Sick Person	1087
Code 1 Transport	660	Smoke Investigation	53
Commercial Fire (Includes Dngrd)	27	Snake removal	279
Diabetic Problem	104	Special Rescue	2
Electrical Hazard	24	Stab/GSW/Pen	3
Eye Injury	10	Stroke/TIA	193
Fainted	157	Suicidal/Psy	130
Fall Injury	1243	Unconscious	193
Fire Alarm	331	Unknown Problem	88
Fire Assist	200	Vehicle Fire	13
Ft Huachuca Backfill	4		
Hazmat	104		

2024 Fire and EMS Training Hours

12,127 Total

- Fire Training (Minimum Required)

Captains	2,232 hrs.
Engineers	2,232 hrs.
Firefighters	6,135 hrs.
Total	10,599 hrs.
- EMS Training (Minimum Required)

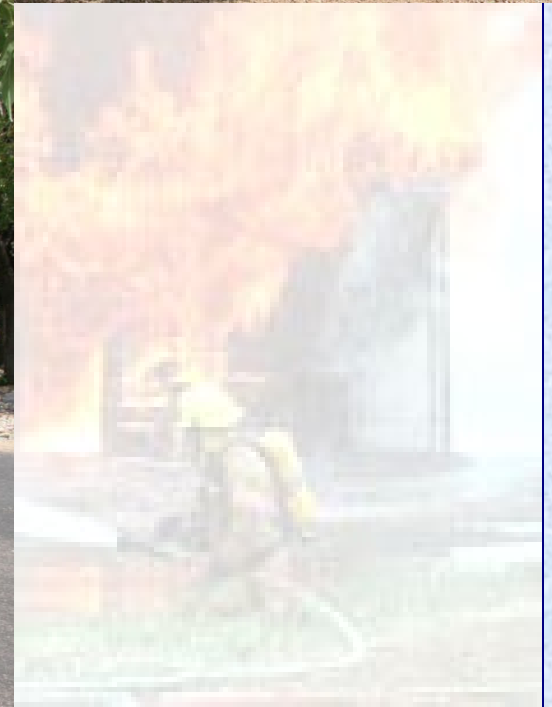
Paramedics	1,132 hrs.
EMT's	396 hrs.
Total	1,528 hrs.





Station 201

1295 E Fry



Station 202

4127 Avenida Cochise



Station 203 675 Giulio Cesare



Station 204 7th and BST



Significant operational timelines

- 2010 – closest station responds to emergencies, regardless of jurisdiction (FFD automatic aid)
- 2015 – enhanced response procedures to dispatch appropriate apparatus, instead of station dispatching
- 2016 – implemented county-wide mutual aid agreement (allows for response to any agency in the county as needed, whenever possible)
- 2016 – implemented peak-hours EMS crew (M-F, 8-5)
- 2018 – PTE in service, began FH EMS division
- 2020 – Design of EMS Sub-station.
- 2022 – Obtained Station Alerting Grant
- 2022 - Construction and Opening Station 204
- 2023 - Signed 10-year agreement with Fort Huachuca for EMS.
- 2023 - Held first Green Academy (8 new hires)
- 2024 - SVFMS and all county Fire agencies received radios
- 2024 – Hired Battalion Chief with a focus on Training

SVFMS Assessment Priorities

- Improve Dispatch Time, Turnout, and Total Response Time.
- Add an additional dedicated EMS transport unit to the daily deployment.
- Add an additional Fire Suppression unit to the daily deployment.
- Continue risk-based planning efforts to meet changes in community demands for services and risks.
- Adopt a system of measures for future action planning and decision making.
- Introduce Outcome Measures to Performance Management Strategies
- Adopt a Strategic Plan to help the department implement action items.



Photography

